

Veteraanien SM 2024 Valkeakoski



Oil Per Board: 50 mu **Oil Pattern Distance:** 41 Feet **Volume Oil Total:** 23.15 mL **Total Boards Crossed:** 463 Boards
Forward Oil Total: 9.75 mL **Reverse Oil Total:** 13.4 mL
Forward Boards Crossed: 195 Boards **Reverse Boards Crossed:** 268 Boards

| | Start | Stop | Loads | Speed | Crossed | Start | End | Feet | T.Oil |
|---|-------|------|-------|-------|---------|-------|------|------|-------|
| 1 | 5L | 5R | 2 | 14 | 62 | 0.0 | 1.9 | 1.9 | 3100 |
| 2 | 6L | 6R | 2 | 14 | 58 | 1.9 | 5.8 | 3.9 | 2900 |
| 3 | 7L | 7R | 2 | 14 | 54 | 5.8 | 9.7 | 3.9 | 2700 |
| 4 | 10L | 10R | 1 | 18 | 21 | 9.7 | 12.2 | 2.5 | 1050 |
| 5 | 2L | 2R | 0 | 18 | 0 | 12.2 | 41.0 | 28.8 | 0 |

| | Start | Stop | Loads | Speed | Crossed | Start | End | Feet | T.Oil |
|---|-------|------|-------|-------|---------|-------|------|-------|-------|
| 1 | 2L | 2R | 0 | 30 | 0 | 41.0 | 35.0 | -6.0 | 0 |
| 2 | 12L | 12R | 1 | 26 | 17 | 35.0 | 31.4 | -3.6 | 850 |
| 3 | 11L | 11R | 1 | 22 | 19 | 31.4 | 28.3 | -3.1 | 950 |
| 4 | 10L | 10R | 1 | 18 | 21 | 28.3 | 25.8 | -2.5 | 1050 |
| 5 | 8L | 8R | 2 | 14 | 50 | 25.8 | 21.9 | -3.9 | 2500 |
| 6 | 6L | 6R | 2 | 14 | 58 | 21.9 | 18.0 | -3.9 | 2900 |
| 7 | 4L | 4R | 2 | 14 | 66 | 18.0 | 14.1 | -3.9 | 3300 |
| 8 | 2L | 2R | 1 | 14 | 37 | 14.1 | 12.2 | -1.9 | 1850 |
| 9 | 2L | 2R | 0 | 10 | 0 | 12.2 | 0.0 | -12.2 | 0 |

Report Date

1/29/2024

Conditioner:
Type In or Select One

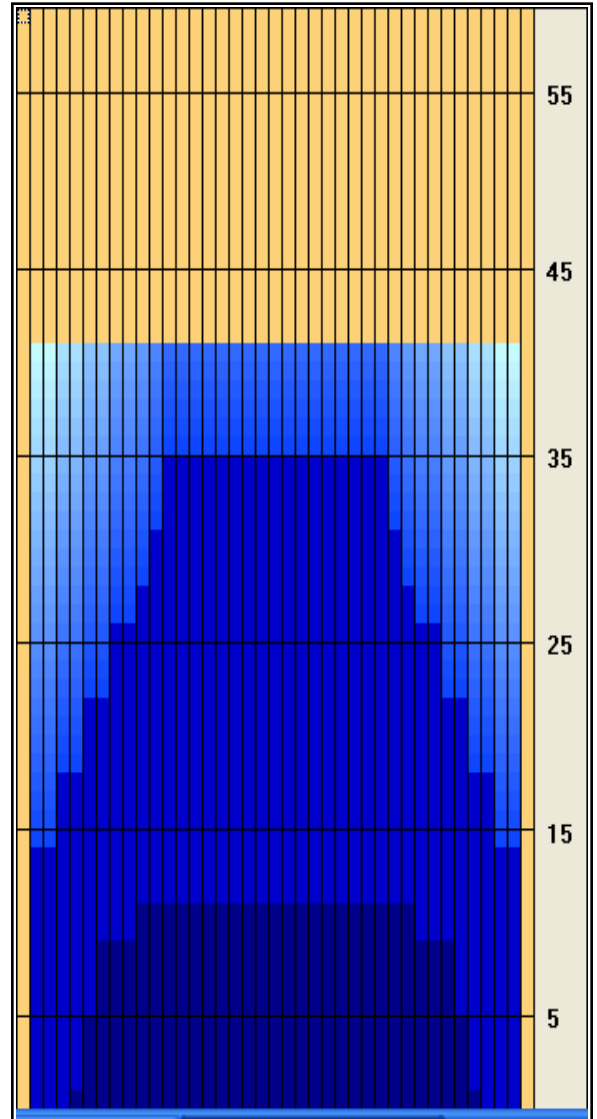
TransferType:
Type In or Select One

Forward Oil

Reverse Oil

Combined Oil

Buff Area



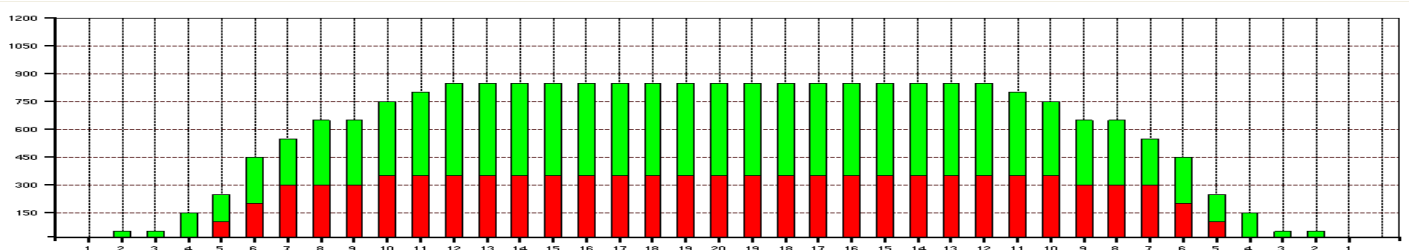
Arrow Zone Ratios

| Item | 2-5L:16L-20 | 6-10L:16:20 | 11-15L:16L-20 | 16L-20:20-16R | 16L-20:20-16R | 20-16R:15-11R | 20-16R:10-6R | 20-16R:5-2R |
|------------|-------------|-------------|---------------|---------------|---------------|---------------|--------------|-------------|
| ulArrow | 125 | 610 | 840 | 850 | 850 | 840 | 610 | 125 |
| Zone Ratio | 6.8 | 1.39 | 1.01 | 1 | 1 | 1.01 | 1.39 | 6.8 |

Track Zone Ratios

| Item | 3L-7L:18L-18R | 8L-12L:18L-18R | 13L-17L:18L-18R | 18L-18R:17R-13R | 18L-18R:12R-8R | 18L-18R:7R-3R |
|------------------|----------------------|---------------------|---------------------|----------------------|---------------------|----------------------|
| Description | Outside Track:Middle | Middle Track:Middle | Inside Track:Middle | Middle: Inside Track | Middle:Middle Track | Middle:Outside Track |
| Track Zone Ratio | 2.93 | 1.15 | 1 | 1 | 1.15 | 2.93 |

Forward **Reverse**



Veteraanien SM 2024 Valkeakoski



| | | | | | | | |
|-------------------------|-------|-----------------------|---------|-------------------------|----------|-----------------------|------------|
| Oil Per Board: | 50 mu | Oil Pattern Distance: | 41 Feet | Volume Oil Total: | 23.15 mL | Total Boards Crossed: | 463 Boards |
| Forward Oil Total: | | 9.75 mL | | Reverse Oil Total: | | 13.4 mL | |
| Forward Boards Crossed: | | 195 Boards | | Reverse Boards Crossed: | | 268 Boards | |

Name of Event

Dates of Event

Location of Event

The following are the details regarding the lanes and conditioning:

Number of Lanes:

Surface:

Pinsetters:

Conditioner:

Cleaner:

Lane Machine:

Enter here additional specific information about the patterns used in the tournament, conditioning date times, frequency of conditionings etc.

Length of patterns:

See graphs for overhead view on conditioning patterns and volume of oil.

Enter any additional tournament information here, number of players, tournament type, special rules, format etc.

Technician Name, Technical Delegate

Name of Event