

Walhalli Open 2019



Oil Per Board: **40 uL** Oil Pattern Distance: **38 Feet** Volume Oil Total: **21.96 mL** Total Boards Crossed: **549 Boards**

Forward Oil Total: **11.44 mL**
Forward Boards Crossed: **286 Boards**

Reverse Oil Total: **10.52 mL**
Reverse Boards Crossed: **263 Boards**

	Start	Stop	Loads	Speed	Crossed	Start	End	Feet	T.Oil
1	2L	2R	1	14	37	0.0	0.0	0.0	1480
2	4L	4R	1	14	33	0.0	1.9	1.9	1320
3	6L	6R	2	14	58	1.9	5.8	3.9	2320
4	8L	7R	2	14	52	5.8	9.7	3.9	2080
5	9L	8R	2	14	48	9.7	13.6	3.9	1920
6	10L	9R	1	14	22	13.6	15.5	1.9	880
7	11L	10R	1	18	20	15.5	18.0	2.5	800
8	13L	12R	1	18	16	18.0	20.5	2.5	640
9	2L	2R	0	18	0	20.5	38.0	17.5	0

Navigation: << >> Forward Reverse More Info

	Start	Stop	Loads	Speed	Crossed	Start	End	Feet	T.Oil
1	2L	2R	0	30	0	38.0	32.0	-6.0	0
2	12L	10R	1	22	19	32.0	28.9	-3.1	760
3	10L	9R	1	22	22	28.9	25.8	-3.1	880
4	9L	8R	2	22	48	25.8	19.6	-6.2	1920
5	7L	7R	2	22	54	19.6	13.4	-6.2	2160
6	6L	6R	2	14	58	13.4	9.5	-3.9	2320
7	5L	5R	2	14	62	9.5	5.6	-3.9	2480
8	2L	2R	0	10	0	5.6	0.0	-5.6	0

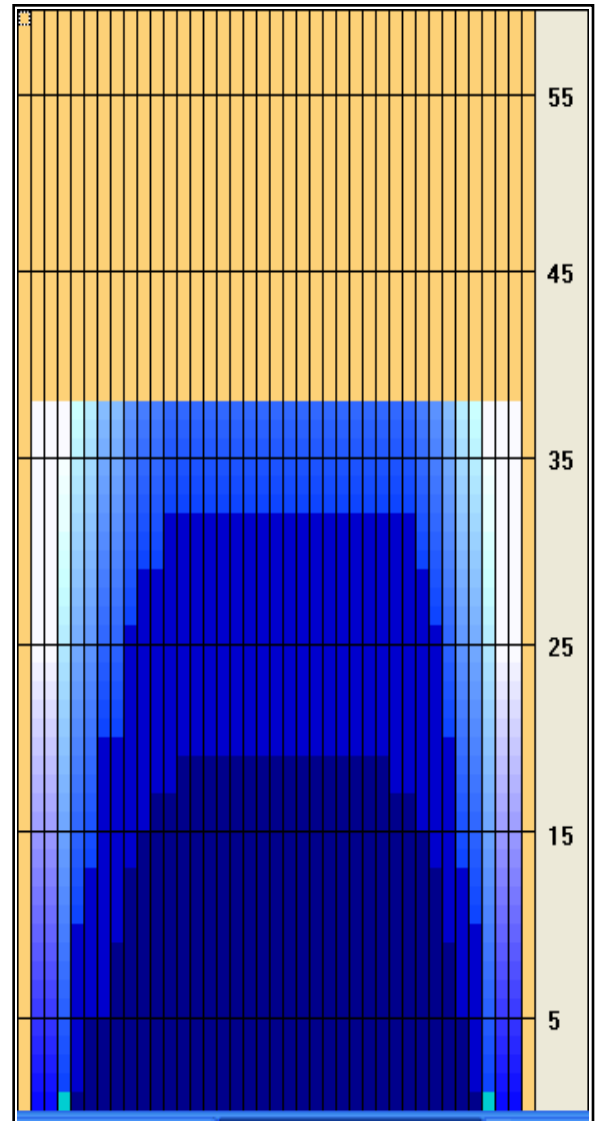
Navigation: << >> Forward Reverse More Info

Report Date
3/19/2019

Conditioner:
Type In or Select One

TransferType:
Type In or Select One

Forward Oil
Reverse Oil
Combined Oil
Buff Area



Arrow Zone Ratios

Item	2-5L:16L-20	6-10L:16-20	11-15L:16L-20	16L-20:20-16R	16L-20:20-16R	20-16R:15-11R	20-16R:10-6R	20-16R:5-2R
ul Arrow	80	512	816	840	840	832	592	80
Zone Ratio	10.5	1.64	1.03	1	1	1.01	1.42	10.5

Track Zone Ratios

Item	3L-7L:18L-18R	8L-12L:18L-18R	13L-17L:18L-18R	18L-18R:17R-13R	18L-18R:12R-8R	18L-18R:7R-3R
Description	Outside Track:Middle	Middle Track:Middle	Inside Track:Middle	Middle: Inside Track	Middle:Middle Track	Middle:Outside Track
Track Zone Ratio	4.2	1.24	1	1	1.11	3.89

Forward Reverse

