

# Makee Kaato 2022



**Oil Per Board:** 40 mu      **Oil Pattern Distance:** 38 Feet      **Volume Oil Total:** 21.96 mL      **Total Boards Crossed:** 549 Boards  
**Forward Oil Total:** 11.44 mL      **Reverse Oil Total:** 10.52 mL  
**Forward Boards Crossed:** 286 Boards      **Reverse Boards Crossed:** 263 Boards

	Start	Stop	Loads	Speed	Crossed	Start	End	Feet	T.Oil
1	2L	2R	1	14	37	0.0	0.0	0.0	1480
2	4L	4R	1	14	33	0.0	1.9	1.9	1320
3	6L	6R	2	14	58	1.9	5.8	3.9	2320
4	8L	7R	2	14	52	5.8	9.7	3.9	2080
5	9L	8R	2	14	48	9.7	13.6	3.9	1920
6	10L	9R	1	14	22	13.6	15.5	1.9	880
7	11L	10R	1	18	20	15.5	18.0	2.5	800
8	13L	12R	1	18	16	18.0	20.5	2.5	640
9	2L	2R	0	18	0	20.5	38.0	17.5	0

**Report Date**

8/21/2022

**Conditioner:**  
Type In or Select One

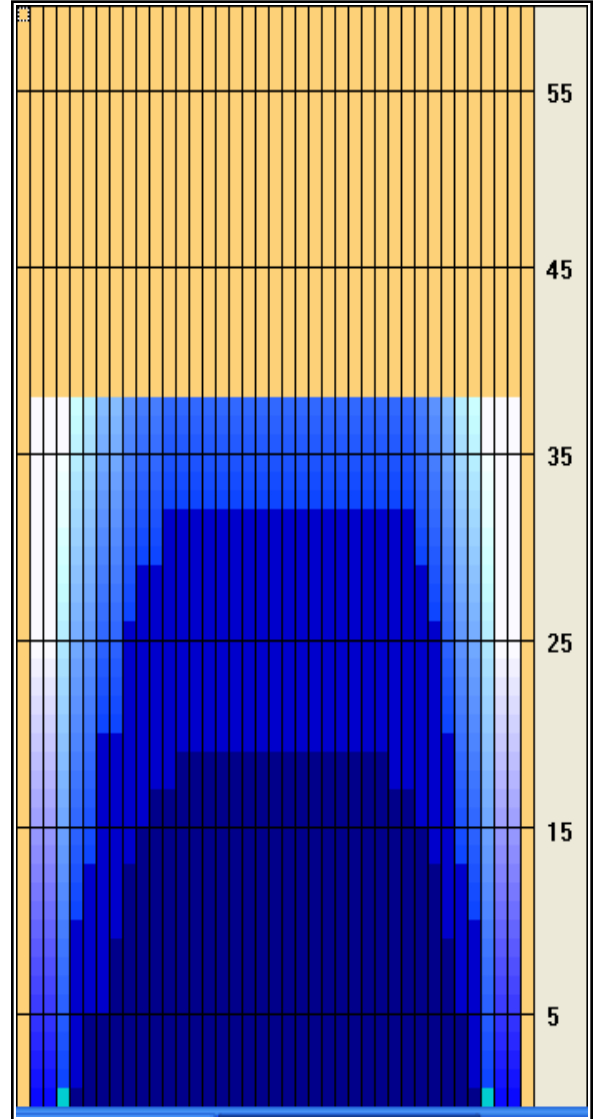
**TransferType:**  
Type In or Select One

Forward Oil

Reverse Oil

Combined Oil

Buff Area



	Start	Stop	Loads	Speed	Crossed	Start	End	Feet	T.Oil
1	2L	2R	0	30	0	38.0	32.0	-6.0	0
2	12L	10R	1	22	19	32.0	28.9	-3.1	760
3	10L	9R	1	22	22	28.9	25.8	-3.1	880
4	9L	8R	2	22	48	25.8	19.6	-6.2	1920
5	7L	7R	2	22	54	19.6	13.4	-6.2	2160
6	6L	6R	2	14	58	13.4	9.5	-3.9	2320
7	5L	5R	2	14	62	9.5	5.6	-3.9	2480
8	2L	2R	0	10	0	5.6	0.0	-5.6	0

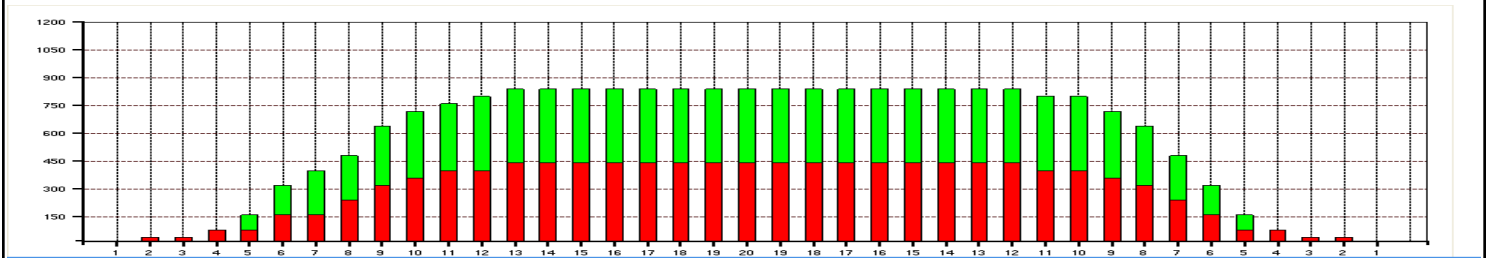
**Arrow Zone Ratios**

Item	2-5L:16L-20	6-10L:16:20	11-15L:16L-20	16L-20:20-16R	16L-20:20-16R	20-16R:15-11R	20-16R:10-6R	20-16R:5-2R
ul Arrow	80	512	816	840	840	832	592	80
Zone Ratio	10.5	1.64	1.03	1	1	1.01	1.42	10.5

**Track Zone Ratios**

Item	3L-7L:18L-18R	8L-12L:18L-18R	13L-17L:18L-18R	18L-18R:17R-13R	18L-18R:12R-8R	18L-18R:7R-3R
Description	Outside Track:Middle	Middle Track:Middle	Inside Track:Middle	Middle: Inside Track	Middle:Middle Track	Middle:Outside Track
Track Zone Ratio	4.2	1.24	1	1	1.11	3.89

**Forward**      **Reverse**



# Makee Kaato 2022



---

Oil Per Board:	40 mu	Oil Pattern Distance:	38 Feet	Volume Oil Total:	21.96 mL	Total Boards Crossed:	549 Boards
Forward Oil Total:		11.44 mL		Reverse Oil Total:		10.52 mL	
Forward Boards Crossed:		286 Boards		Reverse Boards Crossed:		263 Boards	

---

**Name of Event**

**Dates of Event**

**Location of Event**

The following are the details regarding the lanes and conditioning:

Number of Lanes:

Surface:

Pinsetters:

Conditioner:

Cleaner:

Lane Machine:

Enter here additional specific information about the patterns used in the tournament, conditioning date times, frequency of conditionings etc.

Length of patterns:

See graphs for overhead view on conditioning patterns and volume of oil.

Enter any additional tournament information here, number of players, tournament type, special rules, format etc.

Technician Name, Technical Delegate

Name of Event