

# Makee Kaato 2021



**Oil Per Board:** 44 mu      **Oil Pattern Distance:** 39 Feet      **Volume Oil Total:** 22.088 mL      **Total Boards Crossed:** 502 Boards  
**Forward Oil Total:** 17.688 mL      **Reverse Oil Total:** 4.4 mL  
**Forward Boards Crossed:** 402 Boards      **Reverse Boards Crossed:** 100 Boards

	Start	Stop	Loads	Speed	Crossed	Start	End	Feet	T.Oil
1	2L	2R	4	14	148	0.0	5.9	5.9	6512
2	2L	5R	1	18	34	5.9	8.4	2.5	1496
3	4L	5R	2	18	64	8.4	13.5	5.1	2816
4	6L	6R	1	18	29	13.5	16.0	2.5	1276
5	9L	7R	2	18	50	16.0	21.1	5.1	2200
6	11L	9R	2	18	42	21.1	26.2	5.1	1848
7	12L	10R	1	18	19	26.2	28.7	2.5	836
8	14L	11R	1	22	16	28.7	31.8	3.1	704
9	2L	2R	0	26	0	31.8	39.0	7.2	0

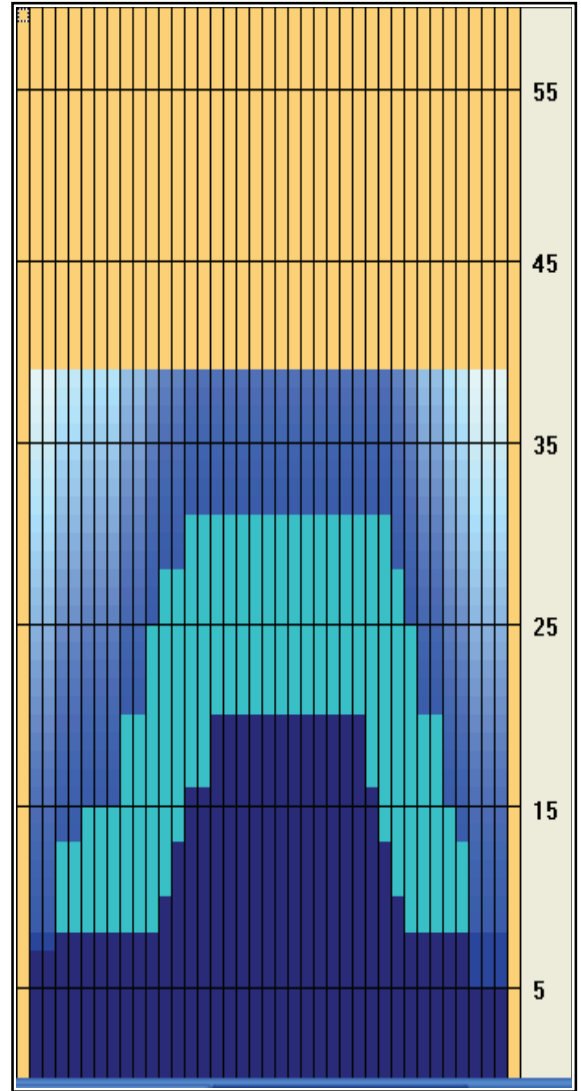
**Report Date**

9/3/2021

**Conditioner:**  
Type In or Select One

**TransferType:**  
Type In or Select One

Forward Oil  
Reverse Oil  
Combined Oil  
Buff Area



	Start	Stop	Loads	Speed	Crossed	Start	End	Feet	T.Oil
1	2L	2R	0	30	0	39.0	20.0	-19.0	0
2	16L	13R	1	26	12	20.0	16.4	-3.6	528
3	14L	12R	1	22	15	16.4	13.3	-3.1	660
4	13L	11R	1	22	17	13.3	10.2	-3.1	748
5	12L	10R	1	18	19	10.2	7.7	-2.5	836
6	2L	2R	1	14	37	7.7	5.8	-1.9	1628
7	2L	2R	0	10	0	5.8	0.0	-5.8	0

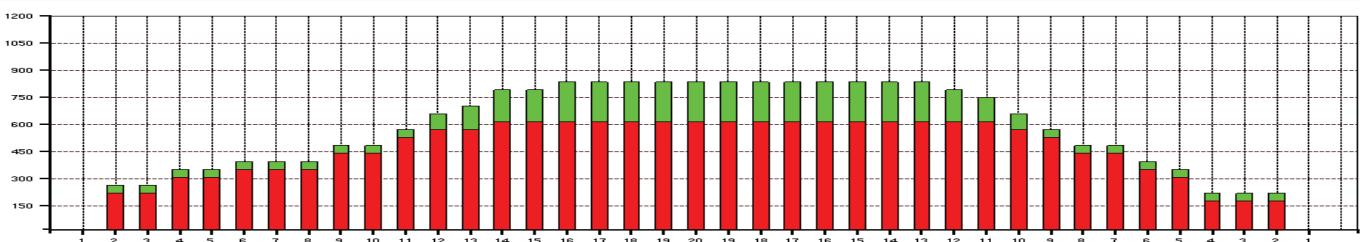
**Arrow Zone Ratios**

Item	2-5L:16L-20	6-10L:16:-20	11-15L:16L-20	16L-20:20-16R	16L-20:20-16R	20-16R:15-11R	20-16R:10-6R	20-16R:5-2R
ul Arrow	308	431.2	704	836	836	809.6	519.2	253
Zone Ratio	2.71	1.94	1.19	1	1	1.03	1.61	3.3

**Track Zone Ratios**

Item	3L-7L:18L-18R	8L-12L:18L-18R	13L-17L:18L-18R	18L-18R:17R-13R	18L-18R:12R-8R	18L-18R:7R-3R
Description	Outside Track:Middle	Middle Track:Middle	Inside Track:Middle	Middle: Inside Track	Middle:Middle Track	Middle:Outside Track
Track Zone Ratio	2.38	1.61	1.06	1	1.28	2.5

**Forward Reverse**



# Makee Kaato 2021



---

Oil Per Board:	44 mu	Oil Pattern Distance:	39 Feet	Volume Oil Total:	22.088 mL	Total Boards Crossed:	502 Boards
Forward Oil Total:		17.688 mL		Reverse Oil Total:		4.4 mL	
Forward Boards Crossed:		402 Boards		Reverse Boards Crossed:		100 Boards	

---

**Name of Event**

**Dates of Event**

**Location of Event**

The following are the details regarding the lanes and conditioning:

Number of Lanes:

Surface:

Pinsetters:

Conditioner:

Cleaner:

Lane Machine:

Enter here additional specific information about the patterns used in the tournament, conditioning date times, frequency of conditionings etc.

Length of patterns:

See graphs for overhead view on conditioning patterns and volume of oil.

Enter any additional tournament information here, number of players, tournament type, special rules, format etc.

Technician Name, Technical Delegate

Name of Event